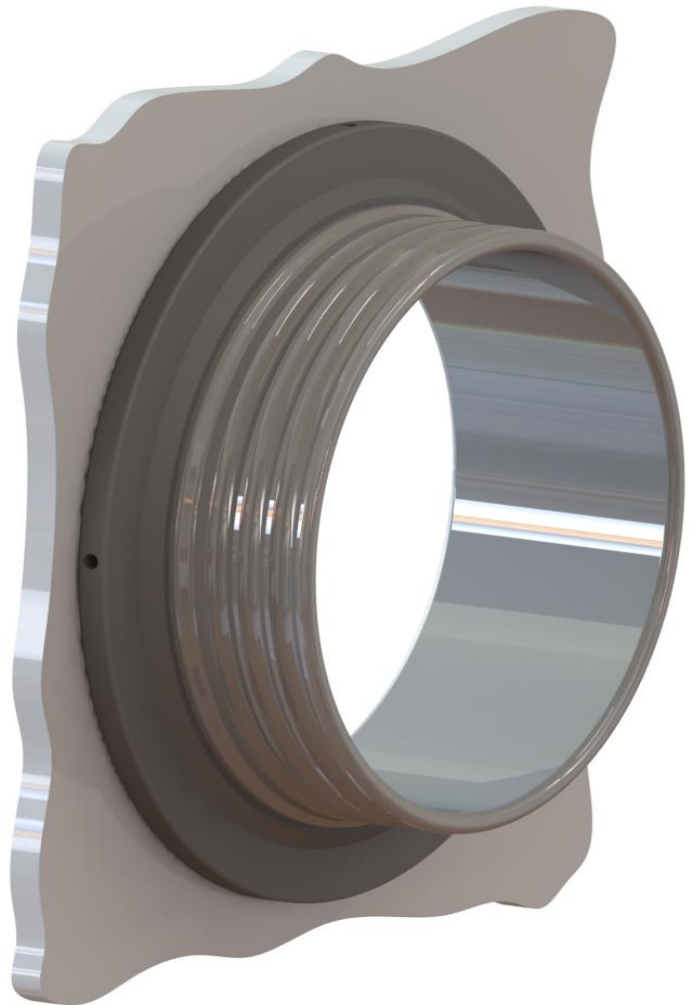


## Port for gloves

The port for gloves will be mounted on smooth walls (of glove boxes e.g.) and serves for the tight attachment of gloves or waste bags. The external groove system allows an easy and contamination-free exchange of gloves or bags.

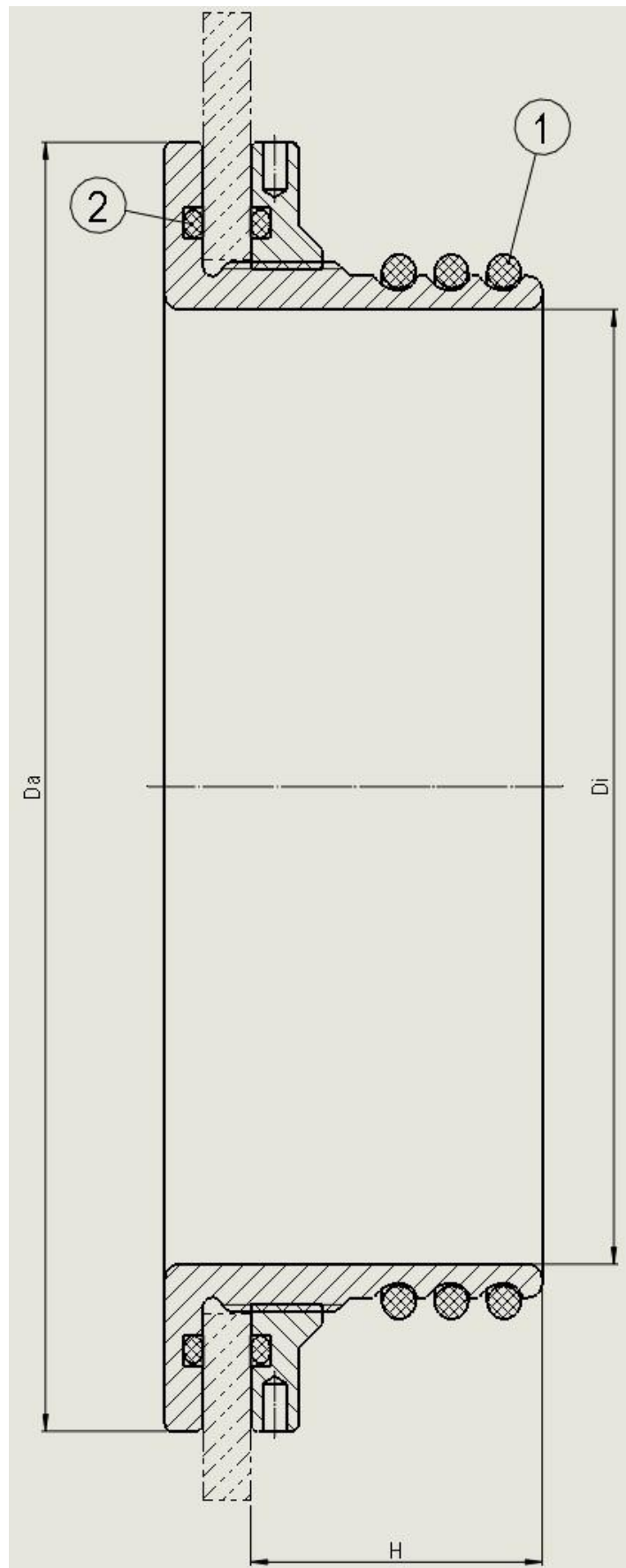
- existing of port and counter ring
- approved external 3-groove system, incl. tightening rings
- allowing a contamination-free exchange of gloves or outlet bags
- considering a small installation depth
- available in suitable sizes for standard gloves and waste bags up to 500 mm diameter
- available in PVC, PMMA (clear) and stainless steel
- available in screwing, glueing and welding versions
- the screwing version comes with two additional sealing rings in the flanges
- available for any wall thicknesses (in steps of 10 mm)



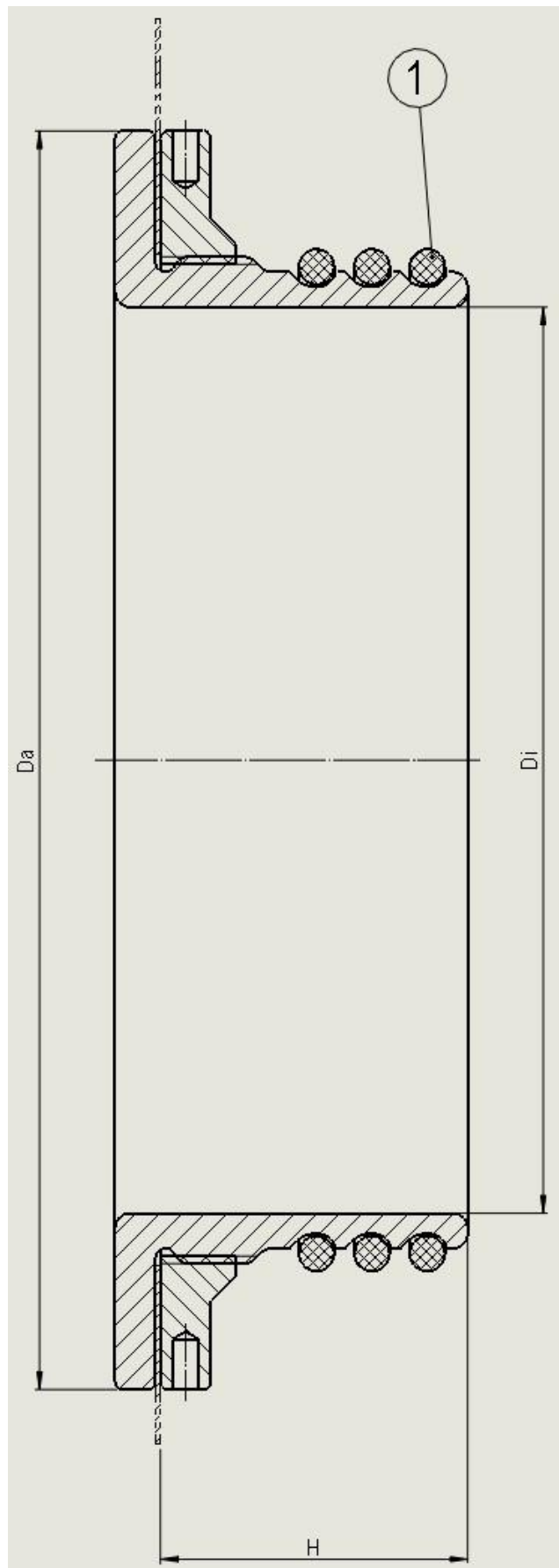
Item no.	Material	Version	Thickness wall	Diam. Da	Diam. Di	Height H	Opening wall	Remark	Seal ring pos. 1	Seal ring pos. 2
114862	PVC, grey	screwed	1...10 mm	250 mm	180 mm	61 mm	D 200 +1 / 0	incl. 2 seal rings	111328	115281
115111	PVC, grey	screwed	11...20 mm	250 mm	180 mm	61 mm	D 200 +1 / 0	incl. 2 seal rings	111328	115281
115123	PVC, grey	screwed	1...10 mm	270 mm	200 mm	61 mm	D 220 +1 / 0	incl. 2 seal rings	115127	115292
115548	PVC, grey	screwed	1...10 mm	220 mm	150 mm	61 mm	D 170 +1 / 0	incl. 2 seal rings	115594	115593
115595	PVC, grey	screwed	1...10 mm	210 mm	150 mm	61 mm	D 170 +1 / 0	incl. 2 seal rings	115594	115593
115167	PMMA, transp.	screwed	1...10 mm	250 mm	180 mm	61 mm	D 200 +1 / 0	incl. 2 seal rings	111328	115281
112274	PVC, grey	glued	1 mm	250 mm	180 mm	61 mm	D 200 +1 / 0	2 grooves	111328	---
115113	PVC, grey	glued	1 mm	250 mm	180 mm	61 mm	D 200 +1 / 0	3 grooves	111328	---
115133	PVC, grey	glued	1 mm	256 mm	186 mm	61 mm	D 206 +0.5 / 0	3 grooves	115135	---
114286	Steel Inox 1.4306	welded	---	200 mm	180 mm	54 mm	D 190 +0.5 / 0	3 grooves	111328	---
115077	Steel inox 1.4306	welded	---	180 mm	160 mm	54 mm	D 170 +0.5 / 0	3 grooves	115116	---
112524	PVC, grey	glued	1 mm	440 mm	350 mm	75 mm	D 370 +1 / 0	3 grooves	114251	---



**Version: screwed**



**Version: glued**



**Version: welded**

